

# ERAY SMART ECO DR SYSTEM

20~80kW



AFFORDABLE & ECONOMIC  
FULL ROOM SOLUTIONS



## ERAY SMART ECO DR SYSTEM

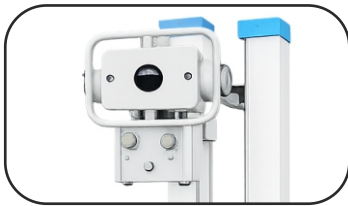
The ERAY SMART ECO DR System is a state-of-the-art digital radiography system that is specifically designed to meet the demands of modern healthcare facilities. By utilizing a single detector, it eliminates the need for multiple detectors, reducing costs and streamlining workflow. Additionally, the system features advanced image processing technology that ensures high-quality diagnostic images with exceptional clarity and detail, making it an ideal solution for a wide range of diagnostic applications. With its user-friendly design, low radiation dose requirements, and compatibility with a variety of imaging modalities and software applications, the ERAY SMART ECO DR System is an excellent choice for any healthcare environment.

## UNIQUE AD An ideal X-ray setup that works



### CF STAND

Ceiling Free (CF) with counter balanced tube head (Rotatable  $\pm 180^\circ$ ) 360° rotatable mounted on floor rail mechanism.



### TUBE HEAD

TUBE ANODE HEAT CAPACITY - Upto 300 kHu  
TUBE HEAD - Angle meter



### MOBILE TABLE

The mobile diagnostic table is designed with a horizontal orientation and features a highly effective and dust-proof braking mechanism.



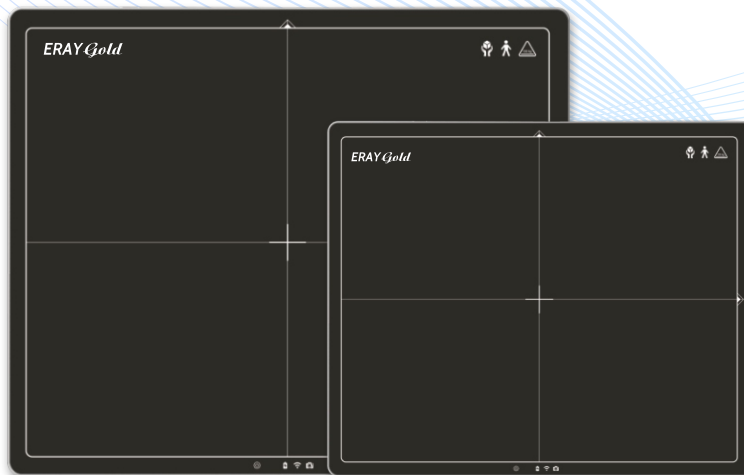
### SINGLE DETECTOR: MULTIPURPOSE APPLICATION

ERAY SMART ECO DR Series can take care of all kind of positioning including:

- Chest X-Ray
- Abdominal X-Ray
- Hand X-ray
- Legs X-ray
- Neck X-ray
- Joint X-Ray
- Kidney, Uterus & Bladder X-ray

# VANTAGES

seamlessly with your needs.



## FLAT PANEL DETECTOR

ACTIVE DISPLAY AREA	ERAYGold 14	ERAYGold 17
<b>DIMENSION</b>	383 x 460 x 15mm	460 x 460 x 15mm
<b>SCINTILLATOR</b>	CsI / GOS	CsI / GOS
<b>GREY SCALE</b>	16 bit	16 bit
<b>PIXEL</b>	140 µm	140 µm
<b>INTERNAL STORAGE</b>	300 Images	300 Images
<b>WEIGHT</b>	2.7kg	3.4kg
<b>RESOLUTION</b>	2500 X3052	3072 X 3072
<b>IP RATING</b>	IP56	IP56
<b>DROP TEST</b>	70CM	70CM



## VERTICAL CHEST BUCKY STAND

The floor-mounted chest bucky stand is a versatile and flexible system, designed for easy maneuvering and handling. Equipped with a 17"x17" dynamic flat panel detector, it can be used for lay down, upright, or oblique x-ray examinations. The chest bucky stand features a manually operated tilting design, which allows for easy adjustment in 6 steps of 15 degrees, catering to a wide range of radiography examinations.

# Technical Highlights

## X-RAY GENERATOR

MODEL	ERAY SMART ECO DR 250S	ERAY SMART ECO DR 500S	ERAY SMART ECO DR 630S	ERAY SMART ECO DR 1000S
POWER OUTPUT	20kW	40kW	50kW	80kW
LINE NOMINAL PHASE	Single/ Three Phase 230 VAV/440 VAC, 50/60Hz		Three Phase 440 VAC, 50/60Hz	
LINE VOLTAGE RANGE	10% 50/60 Hz			
kV RANGE	40kV~125kV		40kV~150kV	
mA RANGE	10mA~250mA	10mA~500mA	10mA~630mA	10mA~1000mA
mAs RANGE	0.1mAs~320mAs			
TIMER RANGE	0.01s~10s			
INVERTER FREQUENCY	220kHz			

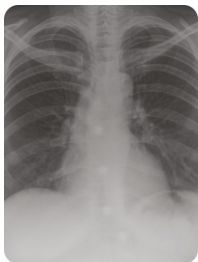
## X-RAY TUBE

FOCAL SPOT	0.6mm~1.2mm	
ANODE HEAT CAPACITY	140kHU	300kHU

## CONSOLE UNIT

SIZE	10"
PROCESSOR	i5
RAM	8GB
HDD	500GB

## Clinical Images\*



NOTE: \*For reference purpose only

## Edusoft Healthcare Limited

B 83, Mangolpuri Industrial Area, Phase 2, Mangolpuri, Delhi, 110083

info@edusofthealth.com | shammi\_gupta@edusofthealth.com

Toll-Free : 1800 120 280 280

DOMESTIC: +91 8851248073, +91 9870227422 | INTERNATIONAL : +91 8826697816, +91 9810081174

- Noida • Lucknow • Chandigarh • Pune • Bhopal • Chennai • Bengaluru • Kolkata • Hyderabad
- Jaipur • Guwahati • Ahmedabad • Mumbai • Nepal • USA

Copyright © 2026 Edusoft Healthcare Ltd. All rights reserved. Specifications and designs are subject to change without notice. Non-metric weights and measurements are approximate. All data were deemed correct at time of creation. Edusoft is not liable for errors or omissions. All brand, product, service names and logos are trademarks and/or registered trademarks of their respective owners and are hereby recognized and acknowledged.



Scan Code or visit  
www.edusofthealth.com  
to learn more